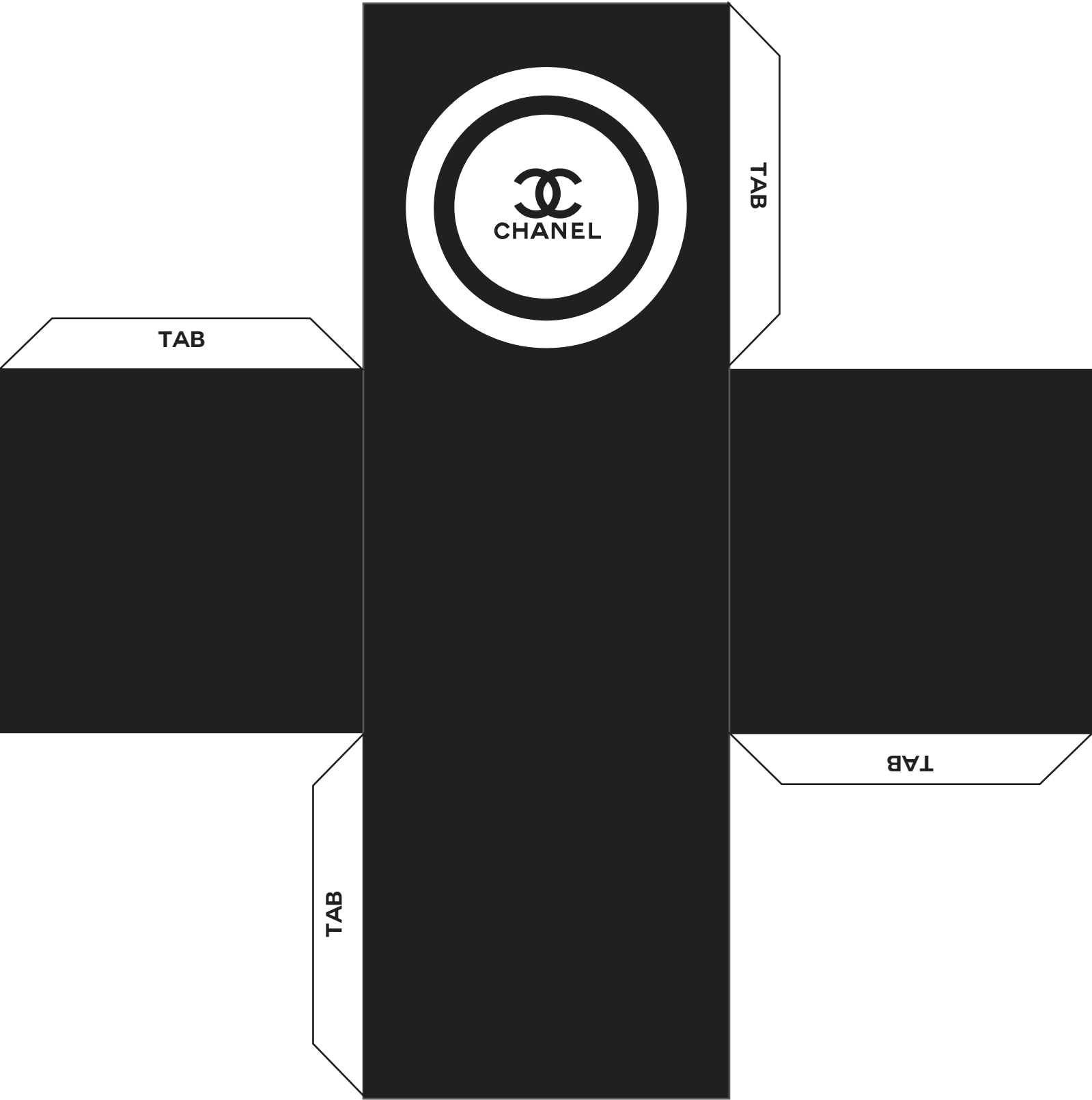


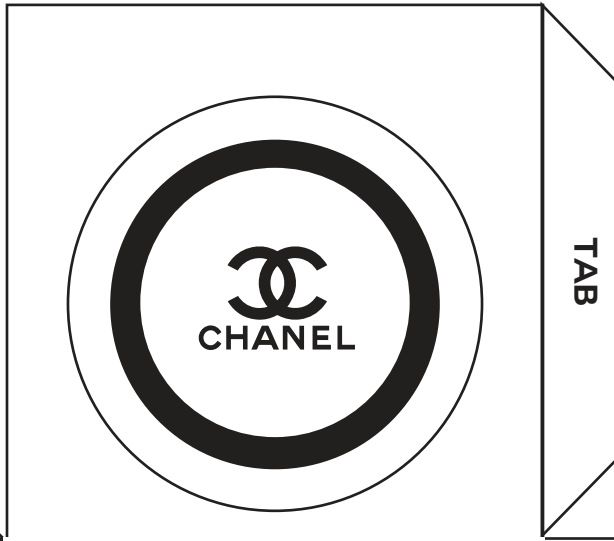
- Directions:
1. Cut on the solid outer lines
 2. Tape down tab
 3. Fill as desired

BOX (NO LID)



- Directions:
- 1. Cut on the solid outer lines
 - 2. Tape down tab
 - 3. Fill as desired

BOX (NO LID)



TAB

TAB

TAB

TAB

- Directions:
- 1. Cut on the solid outer lines
 - 2. Tape down tab
 - 3. Fill as desired

BOX (NO LID)